



FREE QUILT PATTERN
WINDOW TO
THE SOUL 'GYPSY
CARAVAN' QUILT



WINDOW TO THE SOUL 'GYPSY CARAVAN' QUILT

I've remade my "Window to the Soul" quilt to highlight the rich, warm hues of my Gypsy Caravan fabrics. The stained-glass window motif deepens as it tumbles towards the center where the bright splash of citrus green gives the feeling of bright light pouring through. It's a wonderful design for showcasing my favorite print combinations, and I've added an "easy flange" edging to complete the design. Enjoy and Happy Happy Sewing! XO Amy

SEWING PATTERN INCLUDES:

Instructions and measurements to create your own Window to the Soul Quilt with my Gypsy Caravan fabric.

Fabrics designed by Amy Butler for Rowan.
All prints are from Amy's Gypsy Caravan "Stash" collection.

Quilt design by Amy Butler
Construction by Kerri Thomson
Instructions by Anita Peluso

Finished size: 66 1/2" wide x 70 1/2" long

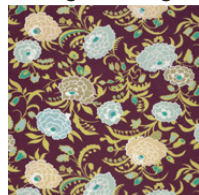
AMY'S FABRICS USED IN THIS QUILT

Center Square
& Quilt Back



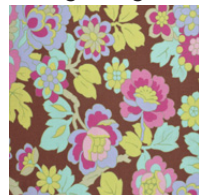
wild poppy/
citrine
PWAB088

Setting Rectangles



gypsy mum/
wine
PWAB082

Setting Triangles



cutting garden/
mocha
PWAB084

First Border



velvet vine/
grape
PWAB089

Second Border



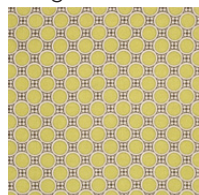
turkish paisley/
nectarine
PWAB090

Third Border



wind flowers/
linen
PWAB086

Flange



deco dots/
citrine
PWAB087



Window to the Soul Quilt (Front)

GENERAL NOTES:

~All seam allowances are 1/4" unless otherwise stated.

~Before you get started, please read through all of the instructions.

~Preshrink your fabric by washing, drying and pressing it.
TIP: Make a small diagonal clip in the corners of each of the fabrics before washing to help prevent fraying and tangling.

~The first time a term is mentioned and followed by an asterisk (*) it is defined in the "Techniques & Terminology" section on Amy's website at amybutlerdesign.com.

~This quilt is made with the design on each fabric facing the same direction. To do this you'll cut the Setting Rectangles on the bias, and for each Border you'll cut 4 strips across the width of the fabric (WOF) and 2 down the length of the fabric (LOF).

~For this Gypsy Caravan version of my Window to the Soul Quilt the Center Square and the Backing are cut from the same print but the yardages are listed separately below.

MATERIALS LIST

NOTE: Allow extra yardage for matching or centering a design on your fabric.

From 44" wide Organic quilting fabric:

- 1/2 yard for the Center Square
- 1 yard for the Setting Rectangles
- 3/4 yard for the Setting Triangles
- 1 1/8 yards for the First Border
- 1 1/2 yards for the Second Border
- 1 3/4 yards for the Third Border
- 3/4 yard for the Flanges
- 4 1/2 yards for the Quilt Back

BATTING/NOTIONS NEEDED

- 1 pkg of cotton batting (100" x 116")
Amy uses Machine 60/40 Blend® Batting from Fairfield
- 2 large spools of a coordinating all-purpose thread
Amy uses her Premium Threads from Rowan
- 3 yards of 18" wide Freezer paper

TOOLS NEEDED

- 24" Quilting ruler
- Straight pins
- Scissors
- Safety pins (large size)
- Hand-sewing needle
- Marker
- Rotary cutter and mat
- Measuring tape
- Iron and ironing board
- Turning tool (such as a closed pair of scissors)

Step 1. MAKE THE TEMPLATES FOR QUILT CENTER

NOTE: You'll use freezer paper to make the templates to fussy cut the desired designs on your fabric. These shapes do not include the seam allowances*, you'll add them on your fabric as you cut out each piece.

A. Using your ruler and marker, measure and mark the following dimensions directly onto the dull side of your freezer paper.

- Cut 1 square 12" x 12"
- Cut 2 rectangles 6 3/8" x 12"
- Cut 2 rectangles 6 3/8" x 24 3/4"
- Cut 2 squares 17 1/2" x 17 1/2"

B. Next, cut both of the 17 1/2" square templates in half diagonally making 4 triangles.

Step 2. CUT OUT THE FABRIC PIECES

NOTE: Please keep the freezer paper templates in place until after the Quilt Center is sewn in Step 3C.

A. As you work with each fabric, lay them in a single layer with the **WRONG** side facing up.

Center Square

B. Center the 12" square template shiny side down over the desired design on your fabric. Line up one edge of the template with the crosswise grain* and press it in place.

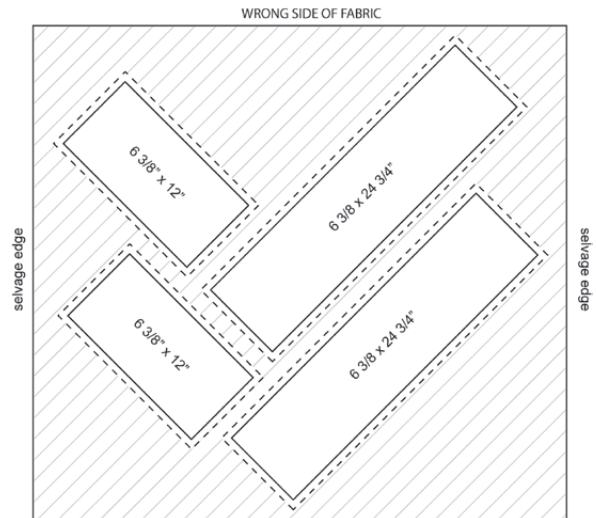
C. Use your ruler, rotary cutter and mat to measure and cut 1/4" past each edge of the template to make the seam allowances.

Setting Rectangles

NOTE: Remember to leave enough space between the templates to cut the seam allowances.

D. Place each of the 6 3/8" x 24 3/4" rectangle templates shiny side down on the bias* of the fabric and press them in place. Then place the 6 3/8" x 12" rectangle templates on the opposite bias and press them in place. (See the diagram at the top of the next column)

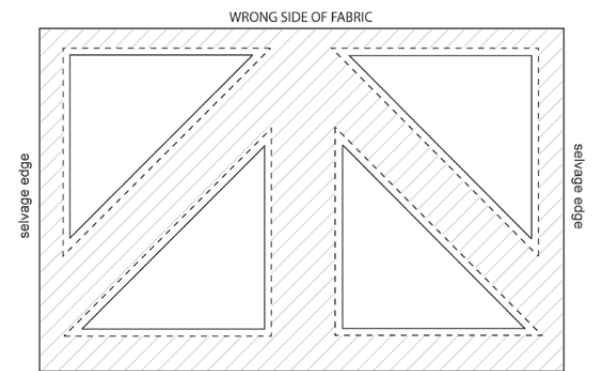
E. Measure and cut 1/4" past each edge of the templates to make the seam allowances.



Setting Triangles

F. Center the 17 1/2" triangle templates shiny side down over the desired design on your fabric and press them in place.

G. Measure and cut 1/4" past each edge of the templates to make the seam allowances.



First Border

- Cut 2 strips down the length of your fabric (LOF)
- 6 1/2" wide x 35 1/2" long.
- Cut 4 strips from the remaining fabric
- 7 1/2" x width of fabric (WOF).

H. Sew each of the 4 strips together with a 1/4" seam and backstitch* at each end. Press the seam allowances to one side.

-Cut 2 pieces from this strip each measuring 7 1/2" wide x 47 1/2" long.

Second Border

- Cut 2 strips down the LOF - 4" wide x 49 1/2" long.
- Cut 4 strips from the remaining fabric - 5" x WOF.

I. Sew each of the 4 strips together with a 1/4" seam and backstitch at each end. Press the seam allowances to one side.

-Cut 2 pieces from this strip each measuring 5" wide x 54 1/2" long.

Third Border

- Cut 2 strips down the LOF - 6" wide x 58 1/2" long.
- Cut 5 strips from the remaining fabric - 6" x WOF.

J. Sew each of the 5 strips together with a 1/4" seam and backstitch at each end. Press the seam allowances to one side.

- Cut 2 pieces from this strip each measuring 6" wide x 65 1/2" long.

Cut and make the Flange

- Cut 7 strips - 3" x WOF.

A. Trim off the selvage edge from each of the strips.

B. With the **RIGHT** sides together and matching the short 3" ends, sew each of the 7 strips together with a 1/4" seam and backstitch at each end. Press the seam allowances to one side.

- Cut 2 pieces from this long strip each measuring 3" wide x 69" long.

- Cut 2 pieces from the rest of the strip each measuring 3" wide x 65" long.

C. To finish the short edges fold each Flange strip in half lengthwise with the **RIGHT** sides together matching the long edges. Pin and sew a 1/4" seam across each short end and backstitch at each end. Then turn the strips **RIGHT** sides out and press them flat.

D. You will now have 2 strips measuring 1 1/2" wide x 64 1/2" long and 2 strips measuring 1 1/2" wide x 68 1/2" long.

E. Set the Flange strips aside for now.

Backing

A. Fold the Backing fabric in half across the width matching the cut edges. Press a crease across the fold and open up the panel. Cut along the crease.

B. Trim off the selvage edges from each of the two panels.

C. Now place both panels **RIGHT** sides together matching two long sides and pin. Stitch a 1/2" seam along the pinned edges and backstitch at each end. Press the seam allowances open.

D. Trim the Quilt Back to the same size as the Quilt Top (65 1/2" wide x 69 1/2" long).

E. Please set the Quilt Back aside while you construct the Quilt Top.

Step 3. MAKE THE QUILT TOP

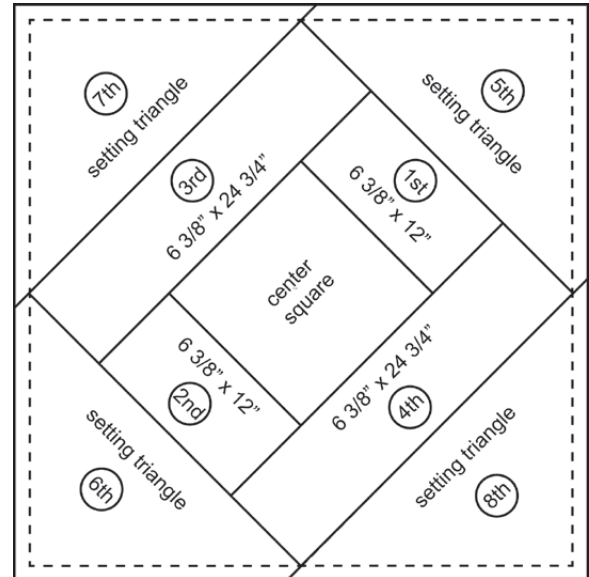
NOTE: Be sure to backstitch as you're sewing and press all seam allowances toward the outside.

A. First sew a 6 3/8" x 12" Setting Rectangle on 2 opposite edges of the Center Square. Then sew a 6 3/8" x 24 3/4" Setting Rectangle on the top and bottom of the Center Square. (**See the Diagram of the Quilt Center.**)

B. Now sew the long edge of a 17 1/2" Setting Triangle on two opposite edges of the rectangles. Sew the other 2 triangles on the top and bottom edges.

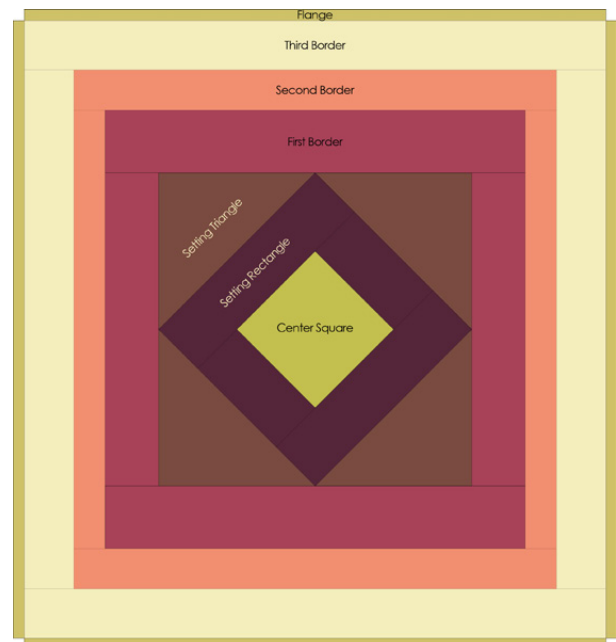
C. Gently remove the freezer paper from the **WRONG** side of the fabric. **NOTE: If the paper doesn't come off easily just get it wet.**

Diagram of the Quilt Center



NOTE: Starting with the Center Square, attach each piece in order, 1st through 8th to make the Quilt Center.

Diagram of the Finished Quilt Top



D. Sew a 6 1/2" x 35 1/2" First Border strip onto the right and left sides of the Quilt Center, backstitching at each end and press. Then sew a 7 1/2" x 47 1/2" strip onto the top and bottom edges, backstitch and press.

E. Repeat Step 3D and sew a 4" x 49 1/2" Second Border strip onto the right and left sides of the Quilt Center. Then sew a 5" x 54 1/2" strip onto the top and bottom edges.

-Sew a 6" x 58 1/2" Third Border strip onto the right and left sides of the Quilt Center. Then sew a 6" x 65 1/2" strip onto the top and bottom edges.

-Sew a 2" x 69 1/2" Fourth Border strip onto the right and left sides of the Quilt Center. Then sew a 2" x 68" strip onto the top and bottom edges.

Your Quilt Top is complete. Turn it **RIGHT** side up and press flat.

Step 4. ATTACH THE FLANGE

A. Place the 64 1/2" long Flanges on the top and bottom edges of the Quilt Top matching the cut edges and centering them so that there is 1/2" of the Quilt Top showing on each side of the Flange. Pin them in place. Baste* a **3/8"** seam along the pinned edges.

B. Repeat this step to attach the 68 1/2" long Flanges to each side of the Quilt Top.

Step 5. ASSEMBLE THE QUILT

A. Open your batting. Lay it on a large flat surface and smooth out any wrinkles.

B. Place the Quilt Top on top of the batting with the **RIGHT** side up. Smooth out the fabric.

C. Then place the Backing and the Quilt Top **RIGHT** sides together smoothing out the panels and tucking the flanges in between. Pin the layers together around all of the edges.

D. Stitch a **1/2"** seam around the pinned edges leaving a 20" opening centered along one side and backstitch at each end.

E. Cut the batting even with the Quilt Top. Trim* all 4 corners in the seam allowance making sure not to clip your stitching.

F. Turn the quilt **RIGHT** side out through the opening. Use a turning tool* to gently push out the corners and pull out the flange. Press the quilt flat.

G. Fold the sides of the opening 1/2" under. Pin and slipstitch* the edges together with your hand sewing needle.

H. Starting at the center of the Quilt Top, use large safety pins and pin the layers together every 5" , or hand baste by making a series of long running stitches through all of the layers.

I. Machine or hand quilt as desired beginning with the Center Square and working your way to the outside edges. Remove the pins as you approach them, or the basting stitches when the quilting is done. This quilt was quilted by stitching-in-the-ditch*.

Nice job! Your quilt is complete. You have made a beautiful keepsake. Be sure to add a fabric label to the back of the Quilt, hand stitching it in place to document your name, address, date and any information you may want to include (perhaps a dedication or a name for the Quilt). Future generations will thank you for this.

I hope you enjoyed creating your own Window to the Soul!



If you liked this free pattern, please be sure to check out my other free patterns like my "Lark Quilt" and "Voile Sun Glow Pillow". Happy Sewing! -Amy



WESTMINSTER
FIBERS
Lifestyle Fabrics

3430 Toringdon Way, Ste 301
Charlotte, NC 28277
Phone: 866-907-3305
Fax: 864-877-3269

Email: fabrics@westminsterfibers.com
Website: www.westminsterfibers.com

R O W A N
FABRICS

GYPSY
CARAVAN
from
amy butler's stash

All designs © 2012 Amy Butler Ltd

amybutlerdesign.com