



 amy butler

Alchemy

sweet slices pillow



ALCHEMY SWEET SLICES PILLOW

I designed my Sweet Slices Pillow to be a yummy compliment to my Alchemy Quilt! Enjoy! XO Amy

SEWING PATTERN INCLUDES:

Instructions and appliqué* templates* to create your own Alchemy Sweet Slices Pillow.

Featuring Alchemy Quilting Cotton
Designed by Amy Butler for Rowan
Pillow design by Amy Butler
Instructions by Sheila Brex
Pillow construction by Kerri Thompson

Finished pillow size: 24" x 24"

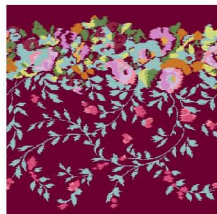
GENERAL NOTES:

- Please read through all of the instruction before you get started.
- Preshrink your fabric: Machine wash warm water; tumble dry low heat. *TIP: Make a small diagonal clip in the corners of fabric piece before washing to help prevent fraying.*
- The first time a term is mentioned and followed by an asterisk (*) it is defined in the "Techniques & Terminology" section on Amy's website: www.amybutlerdesign.com.

FABRIC REQUIREMENTS:



PWAB104 Sketchbook Roses "Sprig" 3/8 yard



PWAB106 Victoriana "Port" 3/8 yard



PWAB100 Flora "Rosebud" 3/8 yard



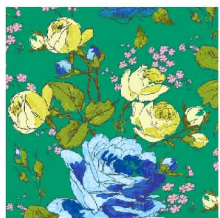
PWAB101 Imperial Paisley "Emerald" 3/8 yard



PWAB102 Fairy Tale "Sky" 3/8 yard



PWAB103 Queen Anns Butterflies "Ruby" 3/8 yard



PWAB104 Sketchbook Roses "Fresh" 3/8 yard



PWAB100 Flora "Fountain" 3/8 yard plus 3/4 yard for backing 1/2 yard for piping

ADDITIONAL FABRIC AND MATERIALS LIST:

- 25" square of linen or linen/cotton blend for the background of the Pillow Front
- 1 spool of coordinating, all-purpose thread
- 24" square pillow form, I used Soft Touch® from Fairfield®
- 2 7/8 yards of 6/32" cotton cording
- Triangle Templates, printed out

TOOLS NEEDED:

- Fabric marking pen
- Straight pins
- Ruler
- Turning tool
- Scissors
- Seam ripper
- Iron and ironing board
- Hand-sewing needle
- Zipper Foot (or Pearl/Piping Foot) for your sewing machine

Step 1.

CUT THE TRIANGLE PIECES OUT OF YOUR FABRICS

A. Cut out the 16 triangle templates from your printed sheets.

Note: Each of the triangle template pieces will need to be placed on the fold* of the fabric. Some fabrics will use three triangles and some will use one or two triangles. See the Fabric Template below to match the corresponding fabrics and templates, or arrange the triangles and fabrics to your liking.



B. Fold each of your 3/8 yard fabric pieces **RIGHT** sides together with the selvages* meeting. Use your iron and press* a crease along the fold. Now lay each of the fabrics open out in front of you with the **RIGHT** sides facing up. Take the selvage ends of each piece and fold them in towards the center crease, pressing two additional creases

(B. Cont) along these new folds. Each fabric should now have three pressed creases.

Note: The following fabrics will have 1 triangle each:
PWAB100 Flora/Rosebud and PWAB101 Imperial Paisley/ Emerald. The following fabrics will have 2 triangles each:
PWAB102 Fairy Tale/Sky, PWAB103 Queen Ann's Butterflies/ Ruby, PWAB104 Sketchbook/Sprig and PWAB106 Victorian/ Port. The remaining fabrics will have 3 triangles each.

C. Pin each of your triangle template pieces onto the corresponding fabrics placing the marked edge of the template along one of the fabric folds. You will need to work in sections with the fabrics that use three triangles.

D. After each piece is pinned to the fabric, use a fabric marking pen and a ruler and add a 1/4" seam allowance to the two sides of each triangle pattern piece that are not along the fold.

E. Cut each of your triangles out of the fabric along these drawn lines.

Step 2.

SEW YOUR TRIANGLES TO MAKE YOUR APPLIQUE PIECES

A. Unpin the template pieces from each triangle keeping the fabric folded **RIGHT** sides together. Pin the two layers together along the short and long edges of each piece.

B. Starting at the fold on the short end of one triangle, backstitch* and sew a 1/4" seam across this edge pivoting* 1/4" from the corner. Continue sewing, using a 1/4" seam allowance, up the long edge until you are 4" from the end of the point and backstitch. Leave a 3" opening, backstitch and then continue sewing to the fold backstitching again. Trim the corners.

C. Carefully turn each triangle **RIGHT** side out through its opening. Use a turning tool*, such as a closed pair of scissors, and push out all the corners. Then press each triangle flat, making sure to fold in 1/4" on each side of the opening. Repeat for all triangle pieces

Note: The opening will be stitched closed when the triangles are appliquéd onto the Pillow Front.

Step 3.

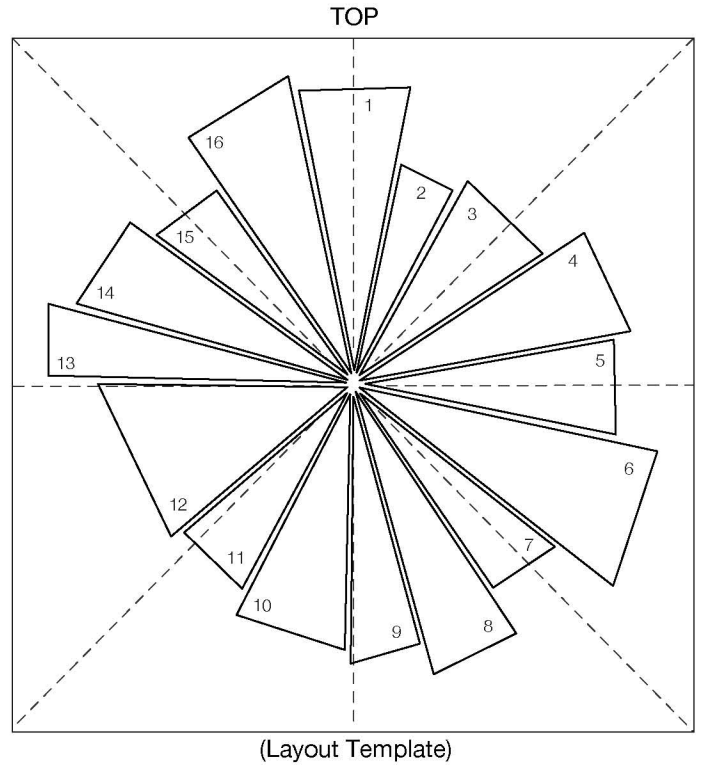
SEW YOUR APPLIQUE PIECES TO YOUR PILLOW FRONT

A. Now find the center of your Pillow Front by taking your 25" linen square, folding it into quarters, and press. Then fold it again diagonally, both ways, and press the folds. The pressed lines will be used for the placement of your triangle pieces.

B. Following the Layout Template illustration or your own design, arrange the triangles on the Pillow Front spacing them about 1/8" apart and with the long ends pointing towards the center but not touching. Use the pressed lines on the Pillow Front and the marked lines in the illustration as guidelines. Pin the triangles to the Pillow Front.

(*SEE LAYOUT TEMPLATE)

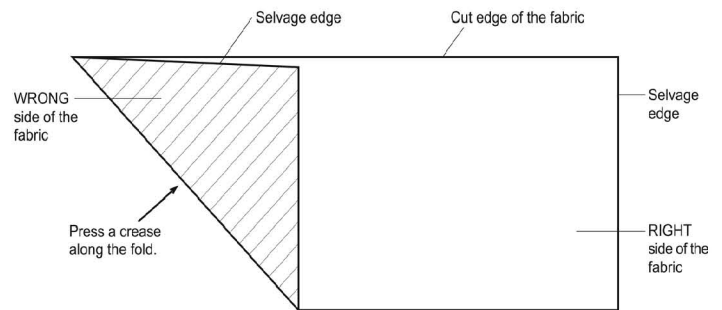
C. Now, starting at a corner of one triangle, backstitch and then appliquéd the piece to the Pillow Front by topstitching* 1/8" away from the edges pivoting at each corner. Backstitch at the end of your stitching to secure. Repeat for all of the triangles.



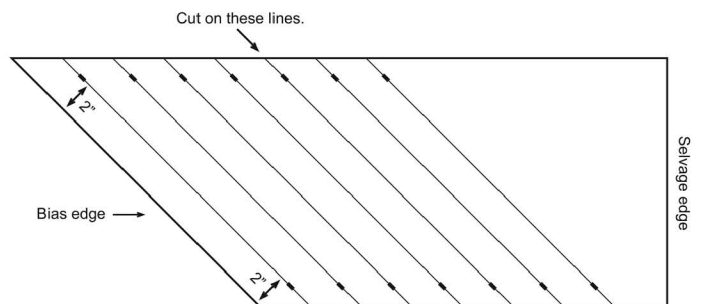
Step 4.

MAKE THE PIPING

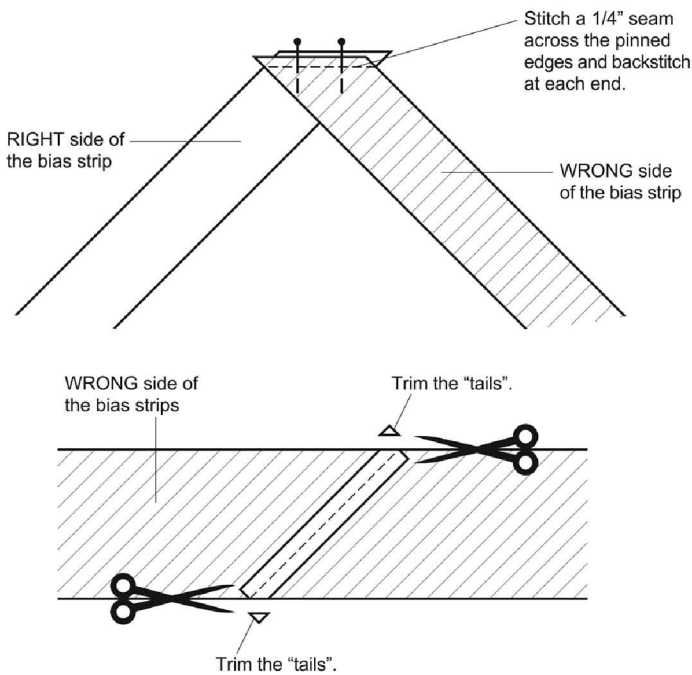
A. Place the 1/2 yard piece of fabric for the piping on a large flat surface with the **RIGHT** side facing up. Fold one selvage edge over to meet the cut edge forming a triangle shape. Press a crease along the fold. Open the fabric and cut along the crease line.



B. Starting at one end of the bias* edge, measure 2" from and parallel to the edge and make a mark. Make another mark 2" in from the opposite end. Match the two marks and draw a line to create a bias strip. Continue to measure and mark 6 more strips, then cut along the marked lines.

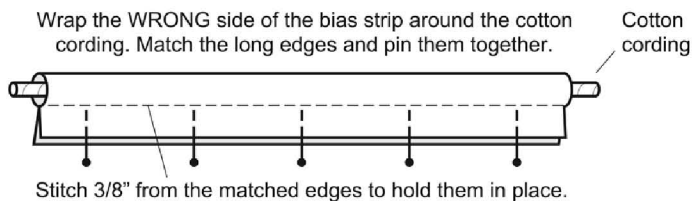


C. Attach the strips into one long continuous piece by placing 2 strips perpendicular to each other. With **RIGHT** sides together match the diagonal edges and pin them in place. Stitch a 1/4" seam across the pinned edge and backstitch at each end. Press the seam allowance open and trim any fabric "tails" along the edges of the seam.



D. Repeat Step 5C until you've attached all of the pieces into one long continuous strip measuring at least 103.5" long.

E. Wrap the **WRONG** side of the bias strip around the cotton cording. Match the long edges and pin them together. Use the zipper foot (or pearl/piping foot) for your sewing machine and stitch 3/8" from the matched edges to hold them in place.



Step 5.

ATTACH PIPING TO THE PILLOW FRONT

Note: Use your zipper foot (or pearl/piping foot) for your sewing machine when stitching the piping to your Pillow Front.

A. Place the piping on the **RIGHT** side of the Pillow Front positioning the ends at the bottom. Match all raw edges, clipping where needed on the cording at the pillow corners, and pin them in place. Cut off the extra piping 1" past the first end.

B. Begin sewing 2" in from the first end and stitch 1/2" seam around the pinned edges, pivoting at the corners. Stop sewing 5" from where you started and backstitch at each end.

C. On the cut end of the cording, use your seam ripper, and remove 3" of the stitching from the fabric cover pulling it back away from the cording center. Overlap the cording with the first end and cut evenly across both. Be careful not to cut the fabric cover or the Pillow Front.

D. Fold the end of the fabric cover 1/4" under toward the **WRONG** side. Wrap it around the first end of the piping enclosing the cut ends. Pin the edges of the cover together and then pin them to the edge of the Pillow Front.

E. Finish sewing the piping to the rest of the Pillow Front connecting with the previous stitching.

Step 6.

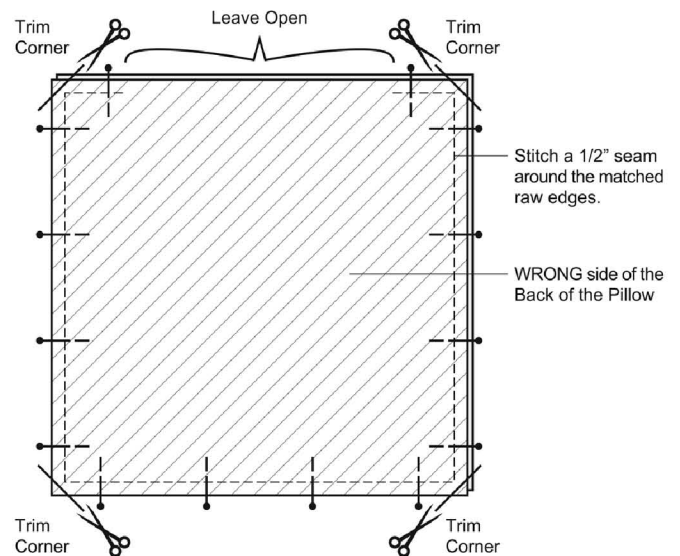
FINISH YOUR PILLOW

Note: Continue to use your zipper foot (or pearl/piping foot) for your sewing machine when stitching the Pillow Front and Back together. Move the needle slightly to the left or adjust the foot slightly to the right in order to stitch closer to the cording when sewing the pillow together.

A. Cut a 25" square from your backing fabric.

B. With **RIGHT** sides together pin the Pillow Back to the Pillow Front, matching all edges and corners.

C. Using a 1/2" seam allowance, sew the Pillow Back to the Front, backstitching and leaving an 18" opening on one side. Trim the corners being careful not to cut the stitching.



D. Turn the cover **RIGHT** side out, gently pushing out the corners and press.

E. Insert the pillow form through the opening of the cover.

F. Fold each side of the opening 1/2" under and pin the edges together. Slipstitch* along the pinned edges to close the opening.

WESTMINSTER
FIBERS
Lifestyle Fabrics

R O W A N

3430 Toringdon Way, Ste 301
Charlotte, NC 28277
Phone: 866-907-3305
Fax: 864-877-3269
Email: fabrics@westminsterfibers.com
Website: www.westminsterfibers.com



SWEET SLICES PILLOW - AMY BUTLER

